

You are the Detective!  
Can you catch the killer?

Money Penny Productions

# WHODUN IT



Google



Tripadvisor



GROUPON

[WWW.MONEYPENNYPRODUCTIONS.CO.UK](http://WWW.MONEYPENNYPRODUCTIONS.CO.UK)



## What do you do on a **Murder Mystery night?**

**As the evening unfolds, guests collaborate to unravel clues, interrogate suspects, and deduce motives and alibis, engaging in captivating detective work to solve the mystery.**

Murder Mystery party night events are often set over evening dinner at venues across the UK. If you're looking for entertainment that promises interactive fun, join one of our murder mystery parties. Consider us as your go-to supplier for an evening that promises quality, laughter, affordability, and a night to die for!

**Join us and let the excitement... and mystery unfold!**





Such a brilliant night out,  
very professional and funny,  
we enjoyed it so much!

Audience feedback review



## How to Plan a Murder Mystery Party

### Pick a theme or story you like

Join an engaging whodunit story

Interrogate suspects

Unravel clues

Collect evidence

Solve the mystery

Lastly, prepare for Fun!

*Why not scan the QR code to see our events in motion?*

We suggest event themes that tie in with client requests, season, location and familiarity with Murder Mystery Whodunit stories.

**The following suggestions are based on your event enquiry.**



# Theme suggestion

## “Murder... Without a Clue’do”

Genre: 1926 Country house setting

Join a cast of classic characters for a Country House whodunit in which YOU are the detective!

When the new butler arrives at the Peacock Estate murder follows in his footsteps. What does he have to hide? Why has he chosen this Country Manor in which to plot and plan his next scheme... and what is his interest in the maid, Miss White. Can the Colonel stop their nefarious proposals before someone is served their just desserts?

Faced paced, hugely entertaining, and devilishly tricky to crack... this case could just prove the death of you!

This interactive production lasts 135 minutes and is suitable for audiences up to 100 guests.

Fancy Dress Idea/Suggestion: Period; Cluedo Colours

(Some guests like to dress up for our events. It is not important that they do so and is up to the promoter if they wish to make this suggestion)





# Theme suggestion

## “Come Die With Me”

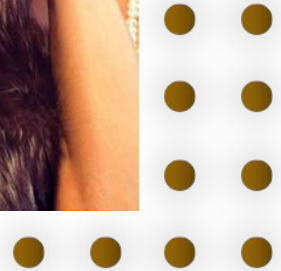
Genre: End of World War II; 1946; Town House setting

Four Chefs. Three courses. Two hours.  
One Victim... and you!

A newspaper headline challenges readers to “Know Your Neighbour” by hosting a series of dinner parties. The knives (and forks) are out as a group of strangers compete for the title of ultimate dinner party host. And with £100 on the table to add spice to the proceedings it comes as little surprise that tonight’s meal will end in Murder!

The War may be over but the fighting has just begun in this comedy whodunit that pits posh nosh against black market rations in a case that asks if YOU can solve the crime?

This interactive production lasts 135 minutes and is suitable for audiences up to 100 guests.  
Fancy Dress Idea/Suggestion: Period; Period; Black Tie; War-Effort  
(Some guests like to dress up for our events. It is not important that they do so and is up to the promoter if they wish to make this suggestion)





## Theme suggestion

### “The Campfire Killer”

Genre: Scouts, Guides, Campers

Be prepared... for Murder.

It's 1971 and rival Scout and Guide troops have pitched up at Foggy Bottom Field—but someone's about to earn their final badge. Tensions flare, secrets unravel, and the Beast of Badge Camp might not be the only thing prowling after dark. With stolen mascots, sabotaged sausages, and a deadly case of sibling rivalry, this murder mystery serves lashings of laughter alongside your dinner.

Pack your sense of humour, polish your woggle, and watch your back... Dinner, drama, and deadly deeds await at this Money Penny Murder Mystery Whodunit Meal in which YOU are the Detective! Can you catch the killer? Badge of Dishonour – where knot-tying can be murder.

Fancy Dress Ideas: Scouts, Guides, Campers

This interactive production lasts 135 minutes and is suitable for audiences up to 100 guests.  
Fancy Dress Idea/Suggestion: Scouts, Guides, Campers  
(Some guests like to dress up for our events. It is not important that they do so and is up to the promoter if they wish to make this suggestion)



# Theme suggestion

## “Sneaky Blinders”

Genre: 1910 British Gangster Theme

It's time for a family sit down. Trouble is brewing in Birmingham as the Trilbies realise that someone is on the take! But who?

Tommy Trilbie wants his cash. Mr Campbell wants revenge and Auntie Dolly has your card marked! But who is out for blood?

Don your flat caps, get your razors at the ready and grab your flappers as the family come together for a night that will end in murder.

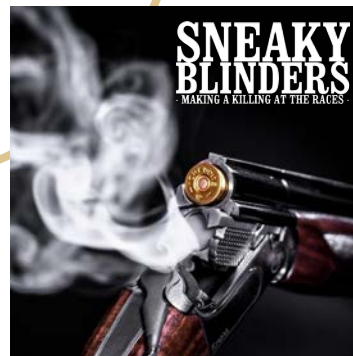
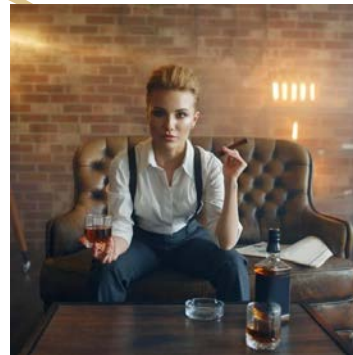
It takes a thief to catch a thief but what will it take for you to catch the killer in this “Sneaky” Whodunit.

This interactive production lasts 135 minutes and is suitable for audiences up to 100 guests.

Fancy Dress Idea/Suggestion: Flat Caps, belts, braces and flappers

(Some guests like to dress up for our events. It is not important that they do so and is up to the promoter if they wish to make this suggestion)

Disclaimer: We explicitly state that we are not officially endorsed by BANIJAY GROUP's Peaky Blinders. This fan-based tribute show does not use include intellectual property related to the show, including the Peaky Blinders trademarks or any Peaky Blinders images and/or artworks.





## Theme suggestion

### “A Lesson in Murder”

Genre: A St. Trinians Themed Murder Mystery

Step into the wild and wacky world of St. Trinians' Finishing-'em-off School, where no prank is too outrageous and no scheme is too daring. Tonight, the halls echo with more than just mischief - it's a comic murder mystery with a deadly twist!

Join a cast of unruly pupils, cunning teachers, and the ever-dubious groundsman, “Flash” Dickie, as they navigate the ultimate test of the British education system: how to get away with murder! When the “new girl” accidentally reveals that her father's prized racehorse is set to win the 2.30 at Lingfield, the devious sixth formers concoct a plan to rig the race and pocket the winnings.

But trouble is afoot! Can Headmistress Miss Fritton outwit her mischievous students and turn the tables? Will Prefect Maud Birdhanger uncover the truth behind the fifth-form gin racket? And what exactly is the mysterious gym teacher, Miss Creepy, hiding in the school accounts?

One thing's for sure... at St. Trinians, even the best-laid plans often end in chaos... and tonight they'll end in Murder! Prepare for a night of laughter, intrigue, and plenty of skulduggery. Don't forget to bring your wits (and maybe a magnifying glass) as you'll be the Detective leading a murder investigation and solving the mystery!

This interactive production lasts 135 minutes and is suitable for audiences up to 100 guests.  
Fancy Dress Idea/Suggestion: Come in your finest; Detectives and sleuths.  
(Some guests like to dress up for our events. It is not important that they do so and is up to the promoter if they wish to make this suggestion)



## Theme suggestion

### “One Way Ticket”

Genre: Steam driven spooky going's on aboard the “NightCrawler”

In the Golden Age of Steam the journey aboard the NightCrawler was supposed to be a simple one. Overnight from Victoria it should have taken the four travellers trapped in carriage number 11 just under two hours to reach Canterbury. Who had locked the doors to the carriage? Why were the occupants travelling by night? Where is the haunting melody of the singing child coming from? Four travellers set off but for one of them... This will be their final destination.

Steam driven spooky going's on aboard the “NightCrawler”

All aboard for Murder?  
Beware the lure of the NightCrawler.

This interactive production lasts 135 minutes and is suitable for audiences up to 100 guests.  
Fancy Dress Idea/Suggestion: Period (1950's), Black Tie  
(Some guests like to dress up for our events. It is not important that they do so and is up to the promoter if they wish to make this suggestion)



## Theme suggestion

### “The Case of the Invisible Corpse”

Genre: The victim is invisible and the case is clear. But Who? How and Why?

1835. Edinburgh University is under investigation after the recent case of the infamous Resurrection Men, Burke and Hare. However, new and more deadly things are afoot through the Greyfriars night...

What would the police have to go upon if the recently resurrected bodies were to disappear?  
Into thin air?

Before your eyes.

For our hapless victim this was a dream that will take him and you to the edge of madness, mayhem and murder!

This interactive production lasts 135 minutes and is suitable for audiences up to 100 guests.

Fancy Dress Idea/Suggestion: Period (1950's), Black Tie

(Some guests like to dress up for our events. It is not important that they do so and is up to the promoter if they wish to make this suggestion)



## Theme suggestion

### “Oh No You Didn’t”

Genre: Panto... Snow Fright and the Panto'Crime Mystery

This Festive Season the fairy tale magic comes served with a side course of murder, mystery, and mayhem... Oh, and more laughs than you can shake a poisoned pudding at! Join us for an interactive comedy panto'crime whodunit in which YOU are the Detective!

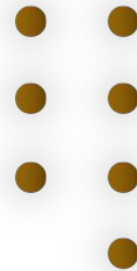
When our lovable Prince Charming takes on the role of a lifetime he wasn't expecting his opening night to be his final curtain call and an ending that's anything but “happily ever after.”. Someone wanted him offstage for good, but who could be behind the dastardly deed? Is Cinderella dying for laughs? Had Snow Fright poisoned the punch? Can Goldi-lock'em up?

With a colourful cast of fairy tale folk, a treasure trove of clues, and more festive fun than you can shout, “He’s behind you!” at, it’s up to YOU to unmask the dastardly “Crimble Killer” before the clock strikes midnight! Whether you’re a keen-eyed detective or just here for the giggles, a Moneypenny Murder Mystery Comedy Dining Event will leave you laughing, guessing, and maybe even gasping until the final bow. Book your tickets now for an unforgettable evening of festive fun and deadly dining. It’s the most laugh-out-loud, perilous panto party of the season and you won’t want to miss it!

This interactive production lasts 135 minutes and is suitable for audiences up to 100 guests. Fancy Dress Idea/Suggestion: Panto Stars, Black Tie or Christmas finest (Some guests like to dress up for our events. It is not important that they do so and is up to the promoter if they wish to make this suggestion)







## Theme suggestion

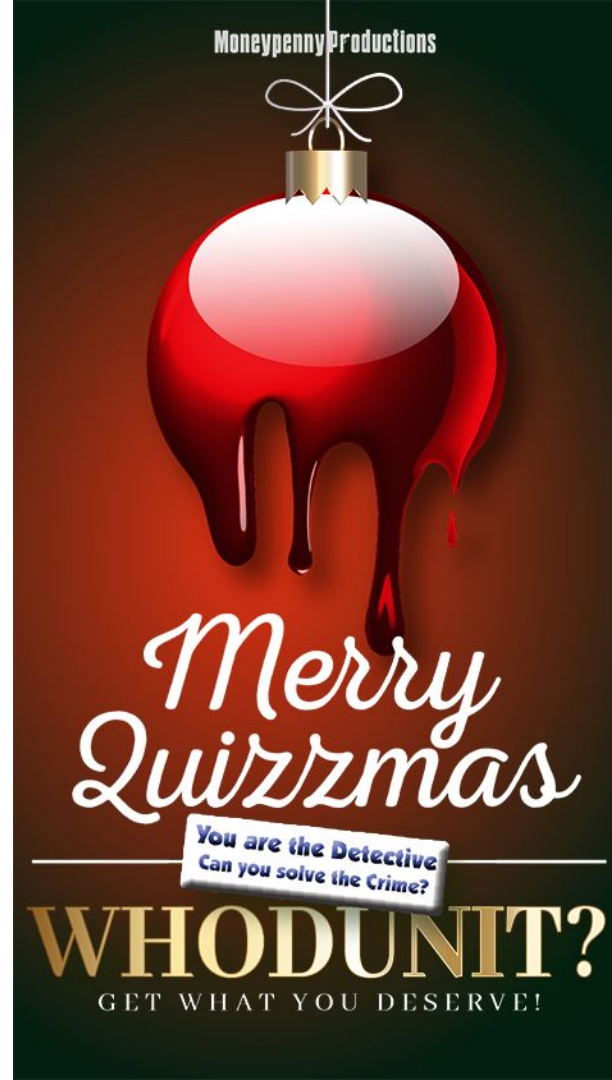
### “The Curse of Christmas”

Genre: Festive Dickensian Merriment

Christmas is a time when you get homesick - even when you're at home! This special season is supposed to be a time of peace, of joy and love... but when the Evergreen family sit down for their Festive Dinner who could have predicted someone's unexpected present appears to have powers beyond the whiskers of ol' Saint Nick himself? For this Yuletide celebration has a touch of magic...

As Midnight approaches on Christmas Eve 1899 our diners find their attention drawn by an amazing discovery from the exotic Far East: The Fortune Telling Fish! When the Christmas crackers are pulled and the toast made, one guest will receive “The Red Herring” and with it the Curse of Christmas. The small fish shaped trinket contained within their cracker appears to be trying to tell them Who? How? And Why? But can the riddle be solved before the last mince pie is eaten or will this meal be your last?

This interactive production lasts 135 minutes and is suitable for audiences up to 100 guests.  
Fancy Dress Idea/Suggestion: Period (1950's), Victorian Dress. Festive. Dickensian.  
(Some guests like to dress up for our events. It is not important that they do so and is up to the promoter if they wish to make this suggestion)





We held a murder mystery in November.  
We were impressed from start to finish:  
communication, time keeping, variety of  
mystery's, helpfulness and professionalism was  
great. Look forward to using them again!

Audience feedback review

## Provision

### What we include with each quote

Each show comes with the following elements included (if required) in the quote provided:

- Marketing portfolio (digital download high res files and templates)
- 250 x A5 colour print double sided leaflets (including postage to Management)
- 6 x A3 colour print High Gloss Posters (including postage to Management)
- Event listing online with ticketing URL, map, event spec via Facebook
- Social Marketing Promotion with active links

--

- Costumed Cast – festive/period attire - Four Actors
- Show props used by actors
- Cast Travel and event get-in costs (including any tolls charges/parking fees)

--

- Digital Sound Equipment (includes background welcome music and FX)
- Event Liability Insurance
- A5 Colour Print double sided Investigation Documents
- Pens for the audience to use during event
- Note Paper sheets for the audience to use during event
- 12 x Winners Certificates
- Administration costs (including contract, receipt)

--

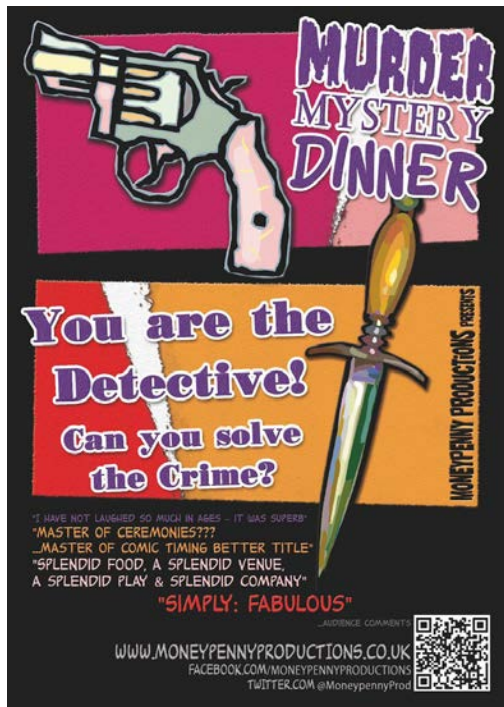
- Digital Photographs supplied after the event  
(images of cast and audience with winners portraits)



## Provision

### What we include with each quote

Examples of social media posts and print materials provided upon request



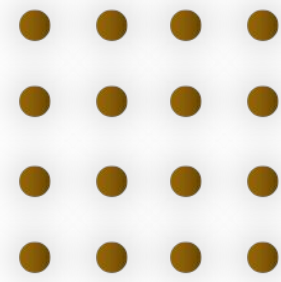
Example print material



Example digital material



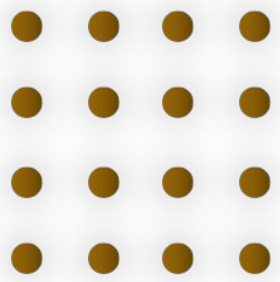




## Provision

### What we include with each quote

Photographs. At the conclusion of each event the cast will have photographs taken with the audience; these are meta tagged with **YOUR** details so they can be found online by search engines. They are available after each event for the audience members to download for free. It's a simple way of providing a lasting memory of the night. Show photographs are a great asset for Instagram and Facebook sharing in the future.





It was done with humour  
and didn't take themselves too seriously.  
Very entertaining!

*Audience feedback review*



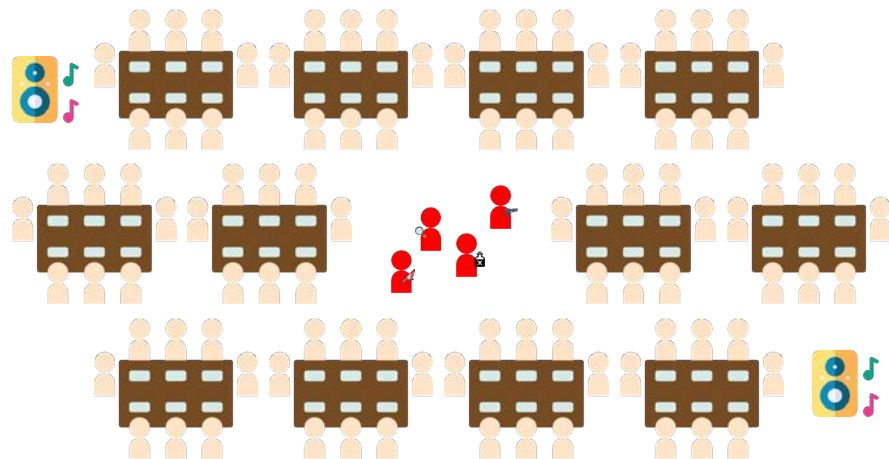


## Guests should be seated in Teams

Our format requires diners to be sat together as teams of detectives. We recommend that tables are of (roughly) equal sizes. These tables will become the teams that play against each other to catch the killer. Unless agreed in writing you should **not exceed 12 tables**. This is because the cast of characters will rotate around the room and spend time with all the diners. We have found that 12 tables is the maximum we can accommodate to create a perfect balance for action, conversation, and timing. For more intimate gatherings it is usual to have 2 – 6 tables of diners.

We bring our own sound equipment with us. This will include a microphone, speakers, amp, cables, and stands. All our equipment is PAT tested and a copy of the certificate is available for download if required.

A performance space should be left (approx. 2m x 2m) in the centre of the room or in a location with as few obstacles or site issues as possible.



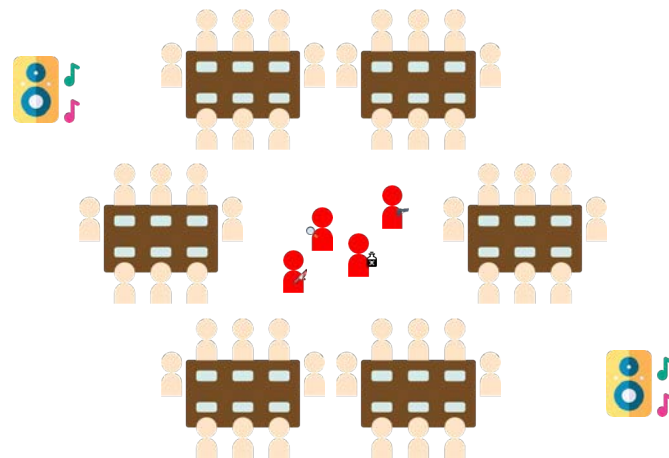


## Guests should be seated in Teams

Our format requires diners to be sat together as teams of detectives. We recommend that tables are of (roughly) equal sizes. These tables will become the teams that play against each other to catch the killer. Unless agreed in writing you should **not exceed 12 tables**. This is because the cast of characters will rotate around the room and spend time with all the diners. We have found that 12 tables is the maximum we can accommodate to create a perfect balance for action, conversation, and timing. For more intimate gatherings it is usual to have 2 – 6 tables of diners.

We bring our own sound equipment with us. This will include a microphone, speakers, amp, cables, and stands. All our equipment is PAT tested and a copy of the certificate is available for download if required.

A performance space should be left (approx. 2m x 2m) in the centre of the room or in a location with as few obstacles or site issues as possible.







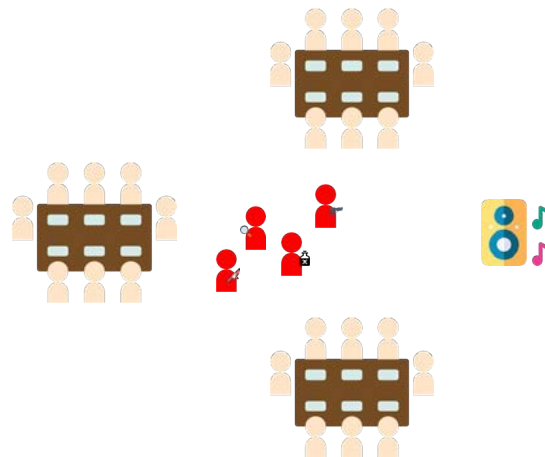
## Guests should be seated in Teams

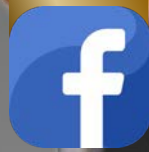
Our format requires diners to be sat together as teams of detectives.

We recommend that tables are of (roughly) equal sizes. These tables will become the teams that play against each other to catch the killer. Unless agreed in writing you should **not exceed 12 tables**. This is because the cast of characters will rotate around the room and spend time with all the diners. We have found that 12 tables is the maximum we can accommodate to create a perfect balance for action, conversation, and timing. For more intimate gatherings it is usual to have 2 – 6 tables of diners.

We bring our own sound equipment with us. This will include a microphone, speakers, amp, cables, and stands. All our equipment is PAT tested and a copy of the certificate is available for download if required.

A performance space should be left (approx. 2m x 2m) in the centre of the room or in a location with as few obstacles or site issues as possible.



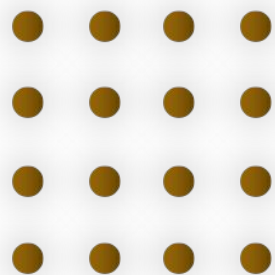


We have been to four events now and enjoyed them immensely. Looking forward to the next one and the one after and the one after that and so on.

**Well worth going...**

Audience feedback review





## Timings

### Three course service

- 18.00: Cast Arrival and set-up  
(cast will request 4 x sandwiches, a lockable room in which to change and access to the performance space)
- 19.00: Audience arrive
- 19.25: Audience called for sit-down, starter served - 10 minute performance of Murder Mystery; Staff requested to adopt a low profile
- 20.15: Starter course cleared - 25 minute performance of Murder Mystery; Staff requested to adopt a low profile
- 20.40: Main Course served whilst cast rotate from table to table for interrogation by the audience. This is followed by a 15 minute performance of Murder Mystery
- 21.20: Main Course cleared
- 21.30: Dessert Course and Coffee are served - 20 minute performance of Murder Mystery; The Killer is revealed and the winners announced.
- 22.00: Murder Mystery concludes with the audience being invited for photographs
- 22.30: Event closed – Room turnaround by venue staff; Cast off site

- Bespoke timings available upon request for
  - No meal
  - Two course service
  - Buffet
  - Four/Five course service



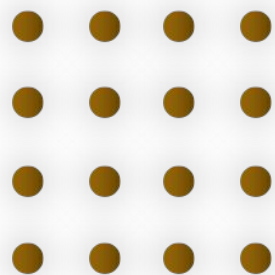




**Our first time with your group  
last night and it was fabulous.**

Audience feedback review





## Terms & Conditions

### Murder Mystery Events

Money Penny Productions conditions of sale include the provision of a lockable room and a basic rider. Please take a moment to read the following. The Management shall be required to make full payment of all outstanding debts within 14 days of the Engagement, payment being the essence of the contract || The Artist retains the option to charge interest at the rate of 8% per month by separate invoice on all accounts that remain unpaid 14 days after the stated terms of credit || The Management agrees to provide suitable and adequate dressing room facilities and/or accommodation when requested by the Artist. Dressing room facilities must be lockable and have exclusivity as we carry firearms as part of the event || The Management agrees to provide the following refreshments when requested by the Artist: 4 x tea, 4 x coffee, still water, 4 x sandwiches (no egg/onion)/bar snack/hot food. Failure to supply these requested items will incur an automatic £25.00+VAT per event addition to the contracted fee || In the event of the Artist or any member thereof being unable to perform at the Engagement through illness the Management will be notified accordingly at the earliest opportunity and if required a Medical Certificate will be forwarded to the Management giving details of the illness and duration of incapacity involved. The Management shall thereupon have the right at its sole discretion to cancel this Agreement and no fees, expenses or deposits shall be payable to the Artist in the event of such a cancellation aforesaid || This contract reflecting the terms and conditions as verbally agreed shall be deemed accepted only when it is signed and returned || In the interest of personal safety it is the policy of the Artist to refuse to perform if verbally or physically threatened. Any cancellation of an event due to these circumstances is done so at the sole expense of the Management || Due to the nature of Money Penny Productions Events the use of professional theatrical firearms is often involved. It is the responsibility of the client (herein called 'The Management') to warn their guests prior to an event with regards to the nature of the performance || An order once placed and accepted cannot be cancelled except with the Artists consent and on terms that will indemnify the Artist against any loss incurred || In the event of the order being Cancelled (other than due to circumstances beyond the control of the venue such as war, National Mourning, Fire, Strike, Lockout in the District directly affecting the Venue or by order of the licensing or Public Authority having Jurisdiction) or Postponed by the Management a fee will be due to the Artist, from the Management as per the following scale: 1. Cancellation of Dates with more than 28 day notice 20% of the Contracted Fee || 2. Cancellation of Dates with less than 28 day notice 50% of the Contracted Fee || 3. Cancellation of Dates with less than 14 day notice 100% of the Contracted Fee || 4. Postponement can take place up to 7 day notice at 50% of the Contract Fee. The postponement date must be agreed in writing by the Artist before the contracted original date of performance || 5. Postponement of Dates with less than seven day notice 75% of the Contracted Fee.



